

Public Realm Portfolio

Artistic Direction, Consultancy, Advisory,
Jury and Editorial Roles

Fatos Ustek, July 2023

Frieze Sculpture, 2023

Regent's Park 19 September - 29
October, 2023

The Context

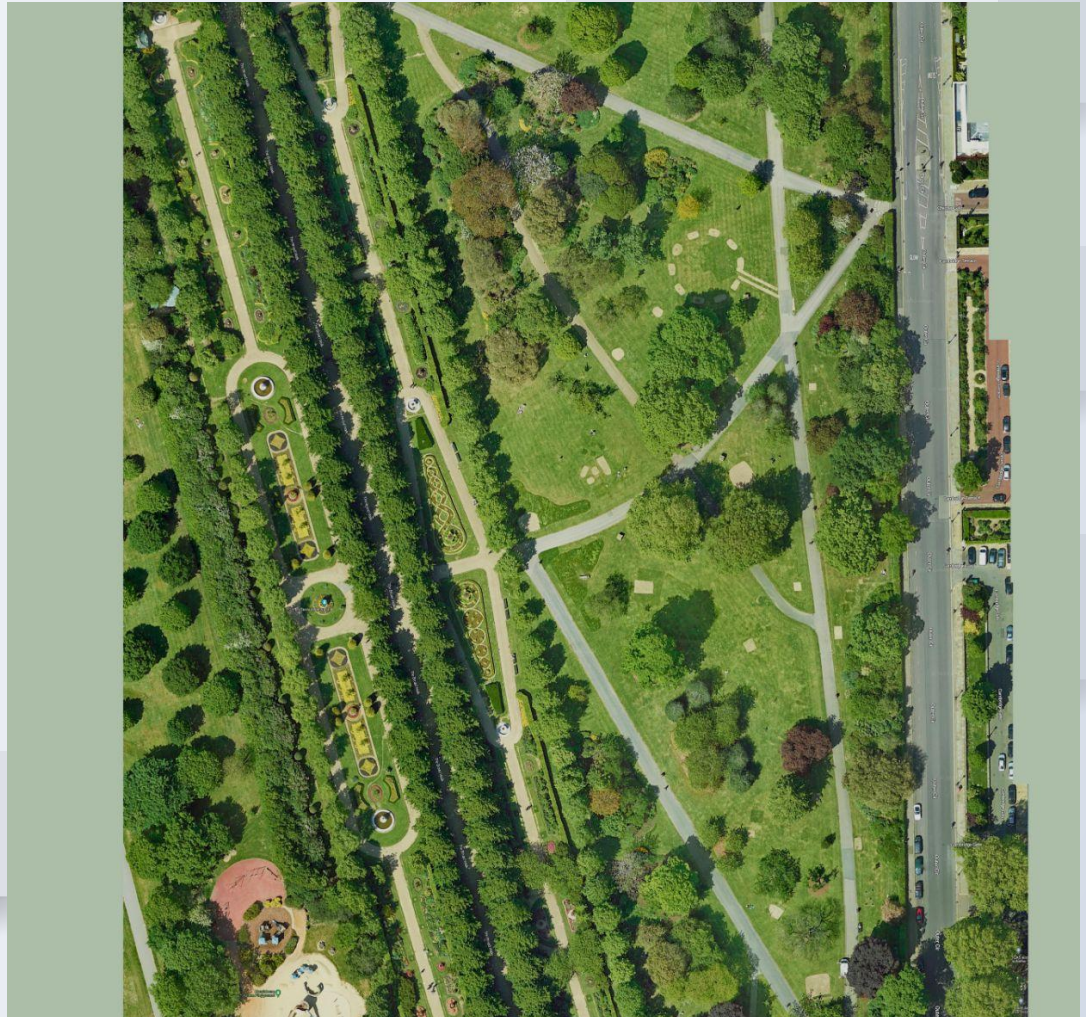
Frieze Sculpture is an annual exhibition of sculptures by internationally celebrated artists, displayed at London's Regent's Park since 2012.

The exhibition takes place over the first two months of Autumn and coincides with Frieze London and Frieze Masters Art Fairs.

On average, Regent's Park welcomes 800K to 1M visitors during September and October.

Extending further across the English Gardens, Frieze Sculpture invites visitors to explore the artistic rigour and ambition of this year's participants. The display will be accompanied by a public programme of live activations and tours, as well as a free audio guide narrated by Üstek and available from frieze.com.

<https://www.frieze.com/tags/frieze-sculpture>



CURATORIAL FRAMEWORK

Making an exhibition on sculpture today requires addressing the monumental and the ephemeral. Since the 1970s, sculpture has been through a plethora of manifestations, from sculptures in the expanded field that relinquished physical objecthood to traces of experience, to expanded notions that incorporate other mediums onto its domain.

Frieze Sculpture 2023 will focus on gathering a wide breadth of artistic practices that conceptualise sculpture today. The display will bring together 20 artworks that further the conception, implementation and reception of the medium and may incorporate sound, light and performance, as well as virtual reality and artificial intelligence, alongside sculptures that are produced following the traditional methods.

Suhasini Kejriwal, *Garden of Un-Earthly Delights*, 2023



Frieze Sculpture 2023

Participating artists and galleries

Ghada Amer, presented by Goodman Gallery
My Body My Choice, 2022

Leilah Babirye, presented by Stephen Friedman Gallery
Cyagenda, 2023

Sanford Biggers, Marianne Boesky Gallery and Massimo De Carlo
Cheshire (Janus), 2023
*on display during Frieze Week only

Jyll Bradley, presented by Pi Artworks
The Hop, 2022

Catharine Czudej, presented by Josh Lilley
Fat Man with Flowers and Man Kneeling with Flowers, 2022

Ayşe Erkmen, presented by Dirimart
Model for Moss Column, 2023

Yuichi Hirako, presented by Gallery Baton
Yggdrasil/Books, 2023 Gülsün Karamustafa, presented by BüroSargedik
Monument for the 21st Century, 2016

Sahasini Kejriwal, presented by Nature Morte
Garden of Un-Earthly Delights, 2023

Tony Matelli, presented by Maruani Mercier
Sleepwalker, 2014

Louise Nevelson, presented by Pace Gallery
Model for Celebration II, 1976

Temitayo Ogunbiyi, presented by Tiwani Contemporary
You will carry dreams, memories, and new beginnings (48 Days), 2023

Zak Ové, presented by Gallery 1957
The Mothership Connection, 2021 Li Li Ren, presented by Sherbet Green
To find a way home, 2023

Hans Rosenström, presented by Helsinki Contemporary
Unfolding Silence, 2023

Tomas Saraceno, presented by Tanya Bonakdar Gallery
Silent Autumn, 2023

Yinka Shonibare CBE RA, presented by Stephen Friedman Gallery
Material (SG) IV, 2023

Josh Smith, presented by David Zwirner
Friend, 2023

Amy Stephens, presented by Bo Lee and Workman
Waking Matter, 2023

Holly Stevenson, presented by Pi Artworks and Sid Motion Gallery
The Debate, 2023

Hank Willis Thomas, presented by Goodman Gallery
All Power to All People, 2023

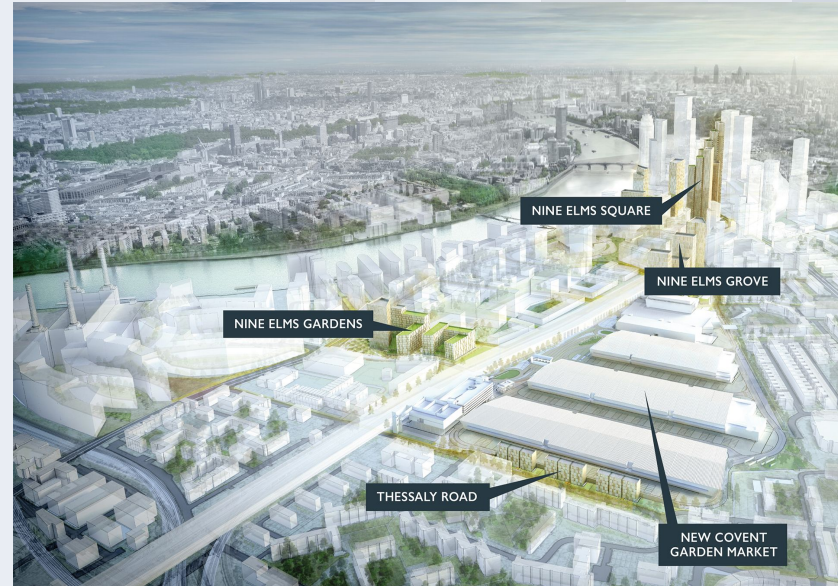
Nine Elms, London Public Realm Commissions

October 2021 -

The Context

The Development:

The joint venture of VINCI St. Modwen (VSM) in partnership with the Covent Garden Market Authority (CGMA) is delivering a landmark multi-phased project, the largest scheme in the Nine Elms regeneration area. New Covent Garden Market, London's original – and the UK's largest – fresh produce market, lies at the heart of Nine Elms. The market operated on three sites totalling 57 acres, and these are being consolidated onto a single, state-of-the-art 37 acre site releasing 20 acres of land for development. These 20 acres will be transformed into new high quality residential-led mixed-use schemes, comprising approximately 3,000 new homes including 600 affordable homes, 135,000 sq ft of commercial accommodation and 100,000 sq ft of retail, leisure and new community facilities, including shops, cafés and restaurants. It will provide around 2,000 new jobs for this area of London's Nine Elms, in addition to the 2,500 retained jobs in the market. More information on each stage of the development can be found here: <http://www.newcoventgardensites.com>



Tunnel 52



Cascading Principles, Expansions within Geometry, Philosophy and Interference

Mathematical Institute, Oxford University
22 September 2022 - 8 October 2023

Selection of Installation Shots



The exhibition, brings together more than 40 sculptures realised by the artist over the last 17 years. The artworks are placed in public and private areas, forming a web of relationships which emerge as the viewer moves through the building.

The show includes all Conrad's manifold geometric and philosophical investigations into this curious, four-surfaced, triangular prism to date. These include the Paradigms, the Lattice Cubes, the Fractures, the Schisms, and The Dappled Light of the Sun.



Lecture Series

23.02.2023 - Cascading Principles: Expansions within Geometry, Philosophy, and Interference

Chaired by Fatos Ustek

Speakers: Martin Bridson, Conrad Shawcross, James Sparks

27.07.2023 - Envisioning Imagination

Chaired by Fatos Ustek

Speakers: Sir Roger Penrose, Carlo Rovelli, Conrad Shawcross

28.09.2023 - The Role of Patterns in Art and Science

Chaired by Conrad Shawcross

Speakers: Liliane Lijn, Farshid Moussavi, Fatos Ustek

05.10.2023 - Forming a Thought into Form

Chaired by Conrad Shawcross

Speakers: Jon Keating, Robin Mackay, Emma Ridgway

Liverpool Biennial

Extra Curricular Public Realm
Programming

Liverpool Biennial Renewed Vision

Under the Directorship of Fatoş Üstek Liverpool Biennial will commission work that is more public, increasing its international reputation and building a legacy in Liverpool.

GOING PUBLIC

Liverpool Biennial will develop a programme of city-wide commissions and learning projects that will truly stimulate the city and its citizens. We will respond to Liverpool's iconic music heritage, with performance playing an integral part of the 2020 festival.

INTERNATIONALISM

Liverpool Biennial has commissioned artists to reflect contemporary and global issues from the legacy of colonialism to climate change. The responses, displayed throughout the city will inform, inspire and challenge our diverse audiences encouraging engagement and debate.

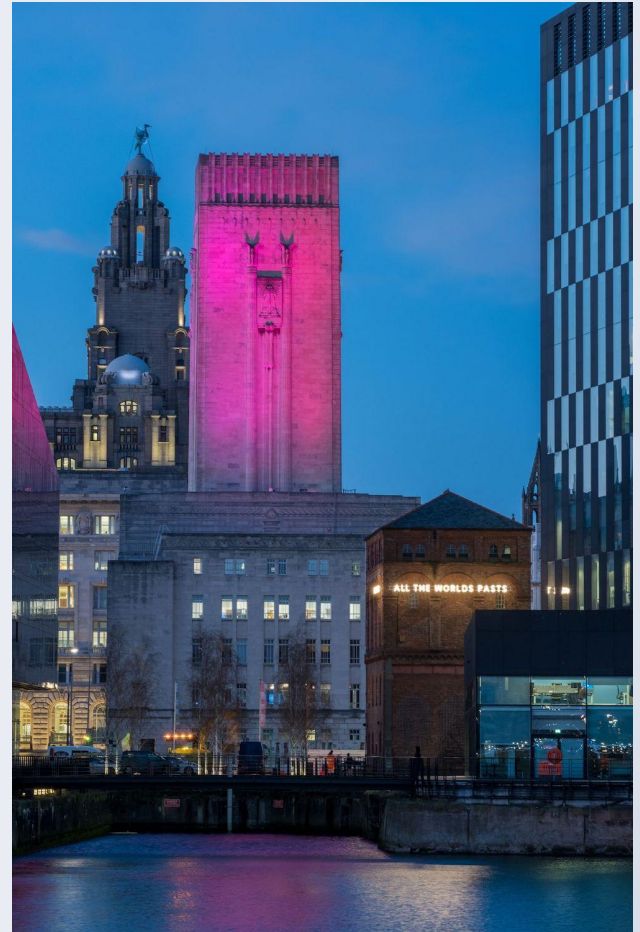
ANCHORED IN LIVERPOOL

Liverpool Biennial is dedicated to the city of Liverpool and increasing access to the arts for everyone. This is built upon bringing people to buildings and areas of Liverpool that have been forgotten, inviting interaction with another layer of the city's history.



Daniel Steegman Mangrane, site-specific commission for Everton Park, Liverpool, 2021

Nathan Coley
From Here, 2020
Culture Liverpool X Liverpool Biennial
Installation
Water Pump Station, Waterfront, Liverpool
Permanent



Art in Motion

Liverpool BID Company X Liverpool Biennial

Gordon Cheung,

Liverpool's Coat of Arms, 2019

Dec 2019 - Mar 2020

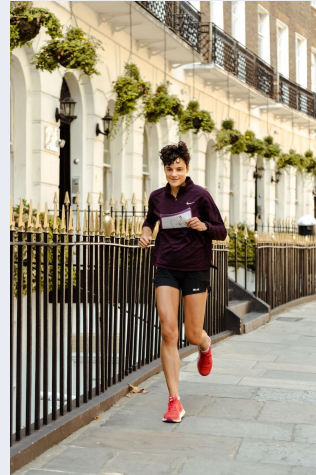


Liverpool Art Run

Pullman Hotels x Art Night x Liverpool Biennial

Waterfront, Liverpool

Sept 2020 Onwards



Art Night 2017

1 mile radius around Whitechapel
Gallery, East London, 1 July 2012

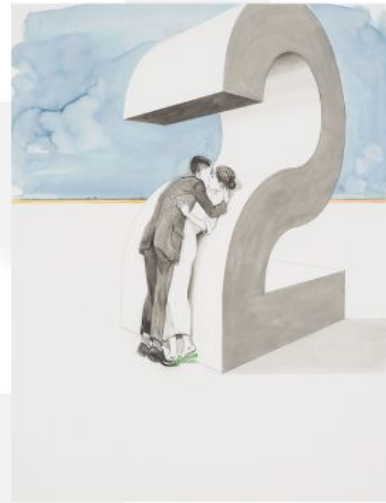
Artistic Direction & Cultural Legacy

- ❑ Devised the Curatorial Framework for a one-night only contemporary Art festival
- ❑ Commissioned 11 artists for 15 sites including Tower Bridge, Exchange Square Broadgate, Spitalfields Church, Whitechapel Gallery, Dennis Severs House, St. Katharine Docks
- ❑ Engaged 60 independent projects as part of the Associate Programme
- ❑ Reached 75K audiences overnight
- ❑ Collaborated with Whitechapel Gallery, Phillips Auction House, alongside 35 supporters ranging from public and private organisations, to corporations and developers
- ❑ Art Night Legacy, joined 3 artworks in public collections with one permanent and one temporary public realm commission
- ❑ Served as Art Night Trustee between September 2017 - September 2021



Map of programmes, Art Night 2017

Charles Avery,
The Islanders, 2017
Sculpture
St Katherine's Docks &
Shoreditch
Overground Tunnel



Charles Avery, The Islanders, 2017

The Egg Eating Egret Bar
St Katherine Docks



Melanie Manchot
Dance All Night (London), 2017
Procession
East London



Melanie Manchot

Dance All Night (London), 2017

Participatory Dance Performance

Exchange Square, Broadgate



Gunes Terkol
Home is where heart is,
2017
Procession
East London



Bascule Chambers, Tower Bridge



Ian Whittlesea, **Becoming Invisible**, 2017



Do Ho Suh, Bridging Home, London, 2018-20



ART NIGHT AT A GLANCE

SOCIAL & ECONOMIC IMPACT

80

Volunteer Art Night Guides (+60%)

317

People involved in paid work

30

Partners and supporters

£580,000

Raised and spent for the artistic projects & the local area

£1.3M

Direct economic impact on the night

VISITORS

75,000

Visitors (+114%)

5,000

Participants

225,000

Live digital audiences
(social media and broadcast)

15%

out-of-town visitors
70% said they came to London
specifically for Art Night

20%

of London visitors said they never
came to East London

THE FESTIVAL

11

Artists

13

Official projects

60

Projects in the Associate Programme
(92% of participants were satisfied and
would reapply)

5-6

Legacy projects (commissions donated to
public collections nationwide or staying
onsite permanently)

MARKETING

4.4M

Social media reach,
April-June 2017 (+91%)

29,000

Unique users, 20 June-1 July (+53%)

90

Press articles

Image: Charles Avery, *Jadindogadendar (Tree no.5)*, 2015. Installation view with performance at St. Katharine Docks. Courtesy the artist and Art Night 2017, Orisim Gallery, Amsterdam, Ingleby Gallery, Edinburgh, and Pilar Corrias, London. Photo: Rama Knight

fig-2 50 exhibitions in 50 weeks

Bicester Village Commissions, Oct-Dec
2015

Deborah Coughlin & The Gaggle
Seven Years of a Woman, 2015
Performance
Bicester Village, Oct-Dec 2015



Vesna Petresin

Telephone Box, 2015

Installation

Bicester Village, Oct - Dec 2015



Annika Strom
The Storytellers, 2015

Video

Bicester Village, Oct-Dec 2015



Shezad Dawood
The Room, 2015
Installation
Bicester Village,
Oct - Dec 2015






L40 Kunstverein, Rosa-Luxemburg Platz, Berlin,
2016

Eva Grubinger,
Black Diamond Bay



fig-2 36/50, ICA Studio & ICA Theatre, 2015

Sternberg Press, 2015



**Artistic Vision,
Public Strategy,
Advisory Roles**

- ❑ **Urbane Kuenste Ruhr** - [Advisory Board Member](#), 2020 -
An arts organisation dedicated to activating the public realm in the Ruhr area, Northern Germany www.urbanekuensteruhr.de
- ❑ **Yan Kose, Istanbul** - [Chief Juror](#), 2023 -
A public art commission, organised twice a year, supported by Kahve Dunyasi <https://www.yankose.org/>
- ❑ **Fourth Plinth, London** - [Nominator](#), 2016 -
An international public art commission for the Trafalgar's Square, organised by the Mayor of London
<https://www.london.gov.uk/programmes-strategies/arts-and-culture/current-culture-projects/fourth-plinth-trafalgar-square/whats-fourth-plinth-now>
- ❑ **Urban Art Forum** - [Member, Workshop leader](#), 2018 - 2021
 - ❑ UAF acted as a sub-section of Urban Land Institute (ULI), a 47K membered network of developers, cultural consultants and architects
 - ❑ Organised and moderated two workshops with consultant Sarah Elson
 - ❑ Swapping Places 19.02.2021
 - ❑ Remixing the High Street 19.04.2021
- ❑ **Liverpool City Council** - [Consultant for Public Realm Strategy](#), 2019-2020
 - ❑ Drafted Public Realm Strategy for the Liverpool City Council, which was included in the Inclusive Growth Plan
 - ❑ Co-commissioned Nathan Coley with Liverpool City Council and Culture Liverpool

Editorial / Publications

Unexpected Encounters, Situations of
Contemporary Art and Architecture
since 2000, Zorlu Publishing, 2012

Unexpected Encounters,
Situations of Contemporary Art and
Architecture since 2000, Zorlu
Publishing, 2012



The Publication Features **works by:**

Allora & Calzadilla / Andreas Slominski / Anish Kapoor / Ann Veronica Janssens / Ayse Erkmen / Benjamin Verdonck / Bettina Pousttchi / Sabine Bitter & Helmut Weber / Bruce Nauman / Callum Morton / Carsten Holler / Chris Burden / Clemens von Wedemeyer / Cyprian Gaillard / Dan Graham / Dan Havel & Dean Ruck / Do Ho Suh / Doris Salcedo / Elmgreen & Dragset / Gelitin / Gregor Schneider / Heather & Ivan Morrison / Hector Zamora / James Turrell / Janet Echelman / Jenny Holzer / Jeppe Hein / John Kormeling / Jurgen Bey / Langlands & Bell / Maider Lopez / Mandla Reuter / Matthew Ritchie / Michael Asher / Michael Strasser / Monika Sosnowska / Murat & Fuat Sahinler / Nathan Coley / Nevin Aladag / Olafur Eliasson / Peter Fischli & David Weiss / Renata Lucas / Richard Wilson / Roman Ondak / Sarkis / Tatzu Nishi / Tobias Putrih / Tomas Saraceno / Tue Greenfort / Wolfgang Winter & Bertold Horbelt

Contributing Writers: Lorenzo Benedetti, Adam Carr, Max Delany, Jeff Derksen, Jes Fernie, Lorenzo Fusi, Aykut Köksal, Francesco Manacorda, Anna Moszynska, Kathleen Ritter and Arzu Yayıntaş